

ClickClack®

Now that
you've got me...
here's how
to use me.

Stick Mixer Instruction Book

CSM001SS

VARIABLE
SPEED
DIAL

TURBO
MODE

DETACHES
FOR EASY
CLEANING

SOFT
GRIP
HANDLE

For household use only.
Save these instructions.

FIRSTLY, LET'S STAY SAFE

So I can keep blending to your high standards, read these safety instructions before using me. And why not keep them somewhere handy?



Important safeguards

READ ALL INSTRUCTIONS BEFORE USE

WARNING: Please ensure all safety instructions are followed carefully. Failure to follow instructions could result in personal injury or property damage.

1. Protective cover fitted on power plug may present as a choking hazard to young children. Remove and discard all packaging before initial use.
2. Use the appliance only for its intended purpose. The appliance is only for domestic use, so read all instructions thoroughly before use.
3. To protect against the risk of electric shock, do not immerse the blender body, power cord or plug in water or any other liquid. Do not handle with wet hands.
4. This appliance should not be used by children and care should be taken when used near children. Children should be supervised to ensure that they do not play with the appliance.
5. This appliance is not intended for use by persons with reduced physical, sensory or mental capabilities or lack of experience and knowledge unless they have been given supervision or instruction concerning use of the appliance by a person responsible for their safety to avoid a hazard.
6. Turn OFF the appliance and unplug from the power outlet when not in use. Turn OFF the appliance and unplug from the power outlet before: approaching moving parts, assembling or disassembling parts, cleaning, leaving unattended, or storing. To unplug, grasp the power plug and pull from the power outlet. Never pull from the power cord. This appliance is not intended to be operated with an external switching device such as a timer.
7. To avoid injury, do not touch any moving parts.
8. Do not operate the appliance with a damaged power cord or plug, or if the appliance malfunctions, or if dropped or damaged in any manner. If damage is suspected, contact ClickClack by email or phone. In order to avoid a hazard, repairs and part replacements must be made by a ClickClack authorised service agent only.
9. Keep the appliance away from hot surfaces. Do not use appliance while heating or cooking on the stove top. Do not use with boiling liquids. Allow hot food and liquid to cool slightly before blending.
10. When mixing liquids, particularly if hot, use a tall container or make smaller quantities at a time to reduce spillage.
11. Do not let the power cord hang over the edge of a table or bench or touch any hot surfaces including the stove.
12. Be careful blending hot liquid as it can be ejected out of the appliance due to a sudden steaming.
13. Do not use attachments that are not approved or sold by the appliance manufacturer.
14. Do not use outdoors or in damp areas.
15. Blades are very sharp, use extreme care when handling the blending shaft and during cleaning. Always keep out of reach of children.
16. Keep hands, hair, clothing, and other utensils away from the appliance during operation to reduce the risk of personal injury and/or damage to the appliance. A scraper may be used but only when the appliance is not running.
17. Potential injury from misuse.

My specifications

Model: CSM001SS

Rating: 220-240V- 50-60Hz 800W

Now it's time to get to know my parts

1. TURBO button
2. START button
3. Blender body
4. Blending shaft (detachable)
5. Speed dial
6. Blades



Cleaning

CAUTION – BEFORE YOU GET STARTED:

- **Blades are very sharp, use extreme care when handling the blending shaft during cleaning.**
- **Always ensure the appliance is turned OFF and unplugged from the power outlet before cleaning.**
- **Do not immerse the blender body, power cord or plug in water or any other liquid!**
- **Do not wash any parts in the dishwasher.**
- **Do not use harsh or abrasive cleaning agents or solvents.**

Before using for the first time, as well as after each use, clean the appliance as follows:

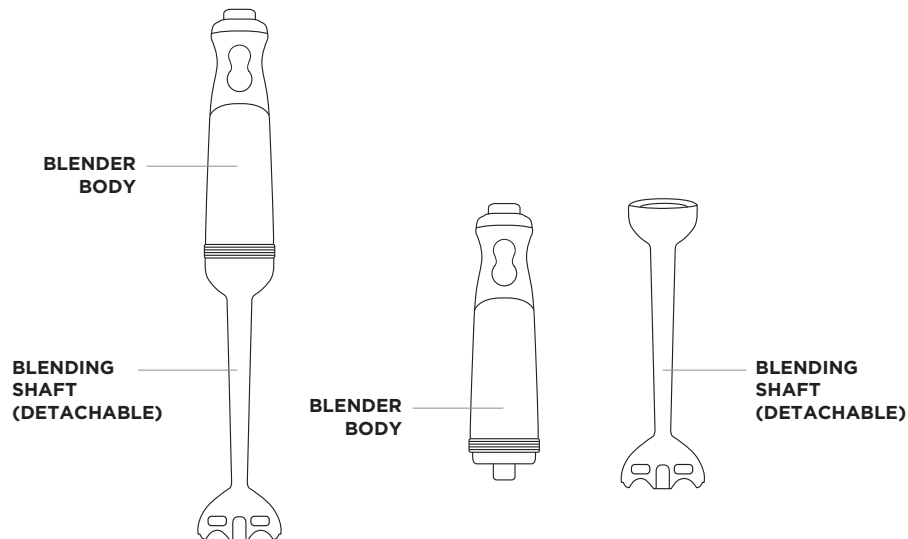
Always ensure the appliance is turned OFF and unplugged from the power outlet before cleaning.

Blender body:

Wipe the exterior surface of the blender body with a damp cloth and dry thoroughly. Never immerse in water or any other liquid.

Blending shaft (detachable):

Detach the blending shaft from the blender body by turning it clockwise. Then wash the blending shaft under running water. Take care to ensure that water does not enter the hollow shaft. Then dry thoroughly.



Usage Instructions

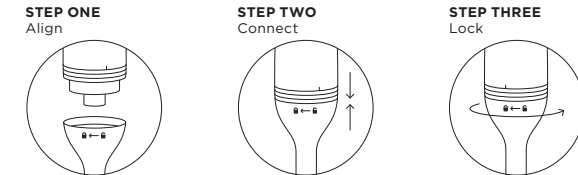
Clean before initial use – refer to cleaning instructions on page 4.

CAUTION:

- **Always ensure the appliance is turned OFF and unplugged from the power outlet before attaching or detaching the blending shaft. Do not plug the appliance into the power outlet until it is fully assembled.**
- **Never immerse the blender body in food or liquid. (See diagram on page 4).**
- **Blades are very sharp, use extreme care when handling the blending shaft.**
- **Always release the START or TURBO button and wait for the blades to come to a complete stop before removing appliance from ingredients.**
- **Do not operate this appliance continuously for more than one minute. After one minute of use, unplug and let the unit rest until it cools down before using again.**
- **Not suitable for use in non-stick cookware.**

Let's get blending!

1. Attach the blending shaft to the blender body and turn anti-clockwise until the blending shaft clicks and locks into place. Use the icons on the blending shaft and the line on the blender body as a guide. Be certain the blending shaft is securely locked in place.



2. Place your food and/or liquid into a container that is tall enough to avoid splashes or spills. Ensure container is placed on a flat, dry surface.
3. Plug the appliance into the power outlet.
4. Carefully immerse the blending shaft so the ingredients in the container cover the blades. Never immerse the blender body in food or liquid. Select the speed. Then press and hold the START button to begin blending. (Always immerse the blending shaft first, to avoid splashes!). The processing speed is set with the speed dial. The higher the setting, the faster the blending results.
5. Work through the ingredients with a gentle up and down movement of the appliance. You can get the maximum processing speed by holding the TURBO button instead of START. You can also use the TURBO button for instant powerful pulses without having to use the speed dial.
6. To turn OFF the appliance, release the START or TURBO button and wait for blades to come to a complete stop.
7. Remove the appliance from the container and unplug from the power outlet. Then detach the blending shaft from the blender body by turning clockwise.
8. Done! Refer to cleaning instructions to get your appliance looking spick and span.

www.clickclack.com

Innova Products Limited

322 Neilson Street, Onehunga,
Auckland, New Zealand.

Phone: 0800 100 345

Email: nzinfo@innovaproductsltd.com