

KitchenAid

STAND BLENDERS

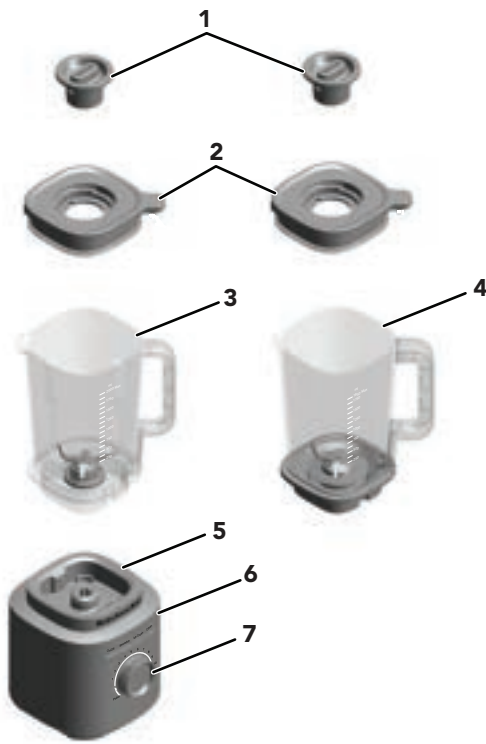
5KSB2072A

PRODUCT GUIDE



W11761076A

PARTS AND FEATURES



- | | |
|---------------------------------------|--|
| 1. Lid Centre Cap | 5. Base |
| 2. Lid | 6. Function Buttons On/Off, Smoothie, Ice Crush, Clean |
| 3. Jar (68 oz/2 L capacity) | 7. Precision Control Knob |
| 4. Glass Jar* (62 oz/1.85 L capacity) | |

*Only available Glass Jar model as an accessory 5KSBJA71.

PRODUCT SAFETY

Your safety and the safety of others are very important.

We have provided many important safety messages in this manual and on your appliance. Always read and obey all safety messages.



This is the safety alert symbol.

This symbol alerts you to potential hazards that can kill or hurt you and others.

All safety messages will follow the safety alert symbol and either the word "DANGER" or "WARNING." These words mean:

⚠ DANGER

You can be killed or seriously injured if you don't immediately follow instructions.

⚠ WARNING

You can be killed or seriously injured if you don't follow instructions.

All safety messages will tell you what the potential hazard is, tell you how to reduce the chance of injury, and tell you what can happen if the instructions are not followed.

IMPORTANT SAFEGUARDS

When using electrical appliances, basic safety precautions should always be followed, including the following:

1. Read all instructions. Misuse of appliance may result in personal injury.
2. To protect against risk of electrical shock, do not put Stand Blender Base in water or other liquid.
3. Appliances can be used by persons with reduced physical, sensory or mental capabilities or lack of experience and knowledge if they have been given supervision or instruction concerning use of the appliance in a safe way and understand the hazards involved.
4. This appliance shall not be used by children. Keep the appliance and its cord out of reach of children.
5. This appliance is not intended for use by persons (including children) with reduced physical, sensory or mental capabilities, or lack of experience and knowledge, unless they have been given supervision or instruction concerning use of the appliance by a person responsible for their safety.

- 6.** Turn the appliance off (On/Off), then unplug from the outlet when not in use, before assembling or disassembling parts and before cleaning. To unplug, grasp the plug and pull from the outlet. Never pull from the power cord.
- 7.** Avoid contacting moving parts.
- 8.** Do not operate any appliance with a damaged cord or plug, or after the appliance malfunctions, or is dropped or damaged in any manner. Return appliance to the nearest Authorised Service Facility for examination, repair, or electrical or mechanical adjustment.
- 9.** Do not use the appliance outdoors.
- 10.** Do not let cord hang over edge of table or counter.
- 11.** Keep hands and utensils out of container while blending to reduce the risk of severe injury to persons or damage to the Blender. A scraper may be used but must be used only when the Blender is not running.
- 12.** Blades are sharp. Handle carefully.
- 13.** Be careful if hot liquid is poured into the Blender as it can be ejected out of the appliance due to sudden steaming.
- 14.** If the supply cord is damaged, it must be replaced by KitchenAid, its service agent or similarly qualified persons in order to avoid a hazard.
- 15.** Always operate Blender with cover in place.
- 16.** Never leave the appliance unattended while it is in operation.
- 17.** When blending hot liquids or ingredients, Lid Centre Cap shall remain in place over the lid opening. Always start on lowest speed and slowly ramp to desired speed when blending hot liquids or ingredients.
- 18.** The use of attachments or accessories, including canning jars, not recommended or sold by KitchenAid may cause fire, electrical shock or injury.
- 19.** Allow the appliance to cool completely before putting on or taking off parts, and before cleaning the appliance.

20. This appliance is intended to be used in household and similar applications such as:

- staff kitchen areas in shops, offices and other working environments;
- farmhouses;
- by clients in hotels, motels and other residential type environments;
- bed and breakfast type environments.

SAVE THESE INSTRUCTIONS

For complete details on product information, instructions and videos, including Guarantee information, visit

www.kitchenaid.com.au or **www.KitchenAid.co.nz**.

1700 PEAK POWER

DISCLAIMER: Laboratory measurement of peak input wattage, not the operational power at the blade; UL rated at 1200 watts.

ELECTRICAL REQUIREMENTS

Voltage: 220-240 V~

Frequency: 50-60 Hz

NOTE: This Blender is equipped with a polarised plug (one blade is wider than the other). To reduce the risk of electrical shock, this plug will fit in a polarised outlet only one way.

If the plug does not fit fully in the outlet, reverse the plug. If it still does not fit, contact a qualified electrician. Do not modify the plug in any way.

GETTING STARTED

BLENDER FUNCTION GUIDE

This Blender offers precise control with 10 variable speeds and a Pulse function, allowing you to customise your blending for any recipe. Convenient pre-programmed settings include Smoothie, Ice Crush, and Clean. The Precision Control Knob also houses the Pulse function, giving you even more flexibility. Since different recipes may require specific speeds for optimal results, we encourage you to experiment and discover the perfect setting for your favourite blends.

SETTING	DESCRIPTION	BLENDING TIME (MINUTES: SECONDS)	SUGGESTED ITEMS TO BLEND
Pulse	Allows precise control of the duration and frequency of blending.	Manual	Salsa, crumb topping, chopped nuts, fruits or vegetables & more.
Variable Speed (1–10)	Manual speeds offer ultimate control of the Blender.	3:00	Fruits, soups, sauces, doughs, vegetables, butters, nuts, dips, frozen desserts, purées.
Ice Crush	The Blender runs at optimal speed to crush ice.	00:30	To crush and chop ice without adding any liquid ingredients.
Smoothie	The Blender will operate at the high speed to make purées of items or ingredients.	00:45	Fruits, vegetables, ice cream and yoghurt into thick smoothie, blended drinks and milkshakes, etc.
Clean	Quick pulses of power and high speeds work to clean the Blender Jar.	00:15	Half of the Jar filled with warm water and 1-2 drops of dish soap.

PRODUCT USAGE

PREPARING THE BLENDER FOR USE

Before using your Blender for the first time, wipe clean Blender Base with a warm damp cloth. Dry with a soft cloth. Wash Blender Jar, Lid, and Lid Centre Cap in warm, sudsy water (see “Care and Cleaning” section). Rinse parts and wipe dry. Be sure the countertop beneath the Blender and surrounding areas are dry and clean.

IMPORTANT: When moving your Blender, always support/lift from the Blender Base. The Base will become disengaged from Jar if carried by Blender Jar or Blender Jar handle only.

USING THE BLENDER

1. Place the Blender Jar by always using the front right side of the handle towards the Precision Control Knob. Make sure that it is fully seated in the Base.



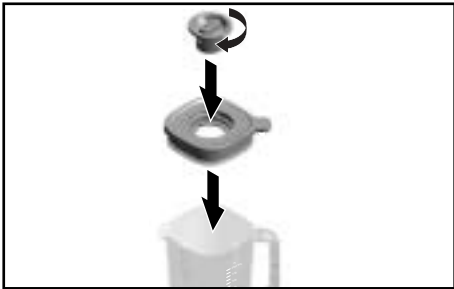
2. Place the ingredients into Jar. Add liquids first, then soft foods, then leafy greens, and ice or frozen items last.



NOTE: Do not fill Blender Jar past the top-most measurement mark. Only place 40 oz maximum of hot liquid in Jar.

3. Secure the lid firmly, ensuring the extended portion of the lid is positioned over the handle, as shown in the image and twist the Lid Centre Cap onto the Lid to lock it in place before blending.

Before operating the Blender, make sure the Jar is properly positioned on the Blender Base. Then, plug the Blender into a earthed outlet.



4. Press the On/Off button and from there either select one of the preset functions or rotate the Precision Control Knob clockwise for variable speed. To use the Pulse function simply turn the Precision Control Knob counterclockwise.



5. When blending hot liquids or ingredients, place the Lid securely on the Jar and lock the Lid Centre Cap in place. It is recommended to operate only on speed 1 while blending hot liquid or food.



6. When finished, turn the Blender off by pressing the On/Off button. Unplug the Blender before removing the Blender Jar.

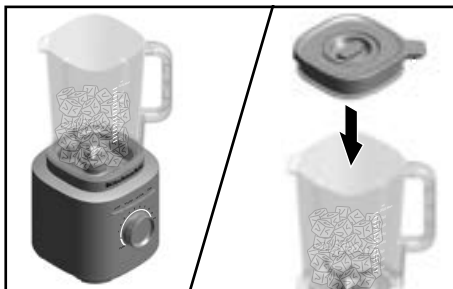


IMPORTANT: Allow the Blender to fully stop before removing the Lid, Blender Jar, or pouring out your blended ingredients.

USING PULSE

The Blender offers a Pulse function. When turning the Precision Control Knob to Pulse, it allows you to manually control short bursts of high speed blending.

1. Place ingredients or ice cubes into the Blender Jar. Secure the lid firmly, ensuring the extended portion of the lid is positioned over the handle, as shown in the image with Lid Centre Cap on Blender Jar.



2. Turn and hold the Precision Control Knob from (•) to Pulse function. Use the Pulse function for ice crushing. This provides maximum blending power. Control the blending duration by holding the Precision Control Knob in the Pulse position. Release the Precision Control Knob to (•) to stop the Blender. See the "Blender Function Guide" section for further details.



NOTE: For variable speeds (from 1 to 10), the Blender will stop automatically after 3 minutes of run time. For preset recipe programs, the Blender will automatically stop blending once the cycle is complete.

NOTE: The Precision Control Knob should be turned to (•) position when use preset function. During the preset function operation, turning the Precision Control Knob can change the preset function to manual control.

TIP : Use half of standard ice cube tray or 7-8 standard ice cubes at a time for blending. The Ice Crush function has been Optimised to crush and chop ice without adding any liquid ingredients.

CARE AND CLEANING

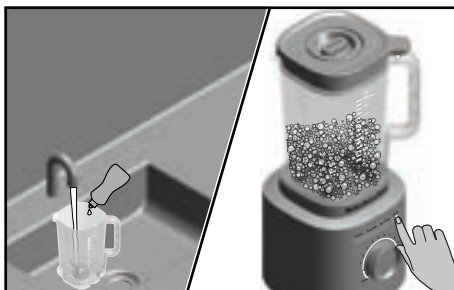
IMPORTANT: Allow the appliance to cool completely before putting on or taking off parts, and before cleaning the appliance.

CLEANING THE BLENDER AND ACCESSORIES

Clean the Blender and accessories thoroughly after every use.

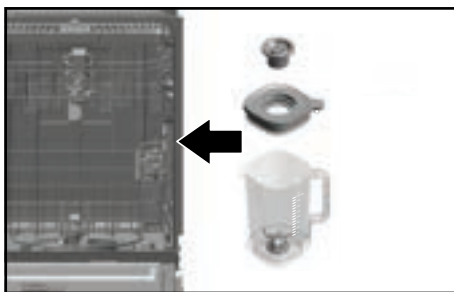
NOTE: To avoid damaging the Blender, do not immerse the Blender Base or cord in water. To avoid scratching the Blender, do not use abrasive cleansers or scouring pads.

1. Remove any remaining contents from the Jar. Fill half of the Jar with warm water, and add 1 or 2 drops of dish-washing liquid. Place the Blender Jar on the Base. Make sure the Blender Jar is fully seated in the Base. Secure the Lid on the Jar, press the Clean function, and run the Blender for 15 seconds cleaning. Remove the Blender Jar, empty contents and rinse with warm water.

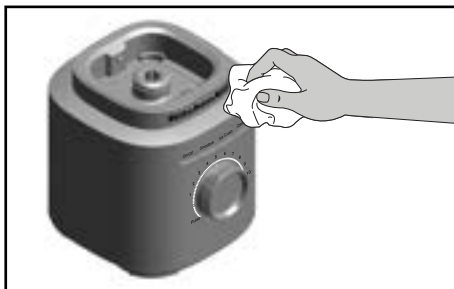


2. The Lid, Jar Assembly, Lid Centre Cap can be cleaned in the top rack of a dishwasher.

NOTE: For best results, store the Jar without the Lid to air out any odours.



3. To clean the Blender Base and cord: Unplug the Blender before cleaning. Wipe clean the Base and the cord with a warm, damp cloth and dry with a soft cloth.



FOR DETAILED INFORMATION ON OPERATING AND CLEANING THE BLENDER

Visit www.kitchenaid.com/quickstart for additional instructions with videos, inspiring recipes, and tips on how to clean your Blender. For additional instructions refer online Product Guide, videos, inspiring recipes, guarantee information and tips on how to clean and operate your Blender.

TROUBLESHOOTING

WARNING

Electrical Shock Hazard




- Plug into an earthed outlet.
- Do not remove earth prong.
- Do not use an adapter.
- Do not use an extension cord.
- Failure to follow these instructions can result in death, fire, or electrical shock.

If your Blender malfunctions or fails to operate


PROBLEM	SOLUTION
If Blender fails to start	Check if the Blender is securely plugged into a earthed 3 prong outlet.
	If you have a circuit breaker box, make sure the circuit is closed.
Blender shuts off during operation after running continuously for 3 minutes.	If the Blender has shut off automatically after running for 3 minutes, reset the knob to (•) to continue with normal operation. The Blender has an auto-shutoff feature as a safety precaution.
Blender shuts off during operation before the automatic 3 minutes shutoff.	If the Blender has been operating in back-to-back cycles under a heavy load, turn off and unplug the machine and allow it to cool completely. If the Blender still does not work after cooling down, please call the service 800 number.
If ingredients are stuck or not blending	Unplug the Blender. Remove the Jar and use a spatula to rearrange ingredients in the Jar.
If Blender stops while blending and the white LED ring flashes rapidly	An error is detected in the Blender. Contact an authorised service centre for assistance. Please see the "Terms of KitchenAid Guarantee" sections.
If the white LED ring is off	10 minutes of no activity will make the Blender go into sleep mode. To wake up the Blender, press (On/Off) button.

ELECTRICAL EQUIPMENT WASTE DISPOSAL

DISPOSAL OF PACKING MATERIAL

The packing material is recyclable and is marked with the recycle symbol . The various parts of the packing must therefore be disposed of responsibly and in full compliance with local authority regulations governing waste disposal.

RECYCLING THE PRODUCT

- By ensuring this product is disposed of correctly, you will help prevent potential negative consequences for the environment and human health, which could otherwise be caused by inappropriate waste handling of this product.
- The symbol  on the product or on the accompanying documentation indicates that it should not be treated as domestic waste but must be taken to an appropriate collection centre for the recycling of electrical and electronic equipment.

For more detailed information about treatment, recovery and recycling of this product, please contact your local city office, your household waste disposal service or the shop where you purchased the product.

CUSTOMER SERVICE

In Australia:

For any questions, or to find the nearest Authorised KitchenAid Service Centre, please find our contact details below.

NOTE: All service should be handled locally by an Authorised KitchenAid Service Centre.

Toll free number: 1-800-990-990

Address Australia:

KitchenAid Australia Pty Ltd

6-8 Billbrooke Close

Cameron Park NSW 2285, Australia

Phone: 1-800-990-990

Email: enquiries@KitchenAid.com.au

In New Zealand:

Website: www.KitchenAid.co.nz

Email: enquiries@KitchenAid.co.nz

Phone: 0800 881 200

In other countries:

For all product related questions and after-sales matters, please contact your dealer to obtain the name of the nearest Authorised KitchenAid Service/Customer Centre.

For complete details on product information, instructions and videos, including Guarantee information, visit our website at: www.KitchenAid.com.au.

NOTES

NOTES

NOTES

KitchenAid

©2025 All rights reserved.